

## Assembly Layout Guide



### Typical Layout

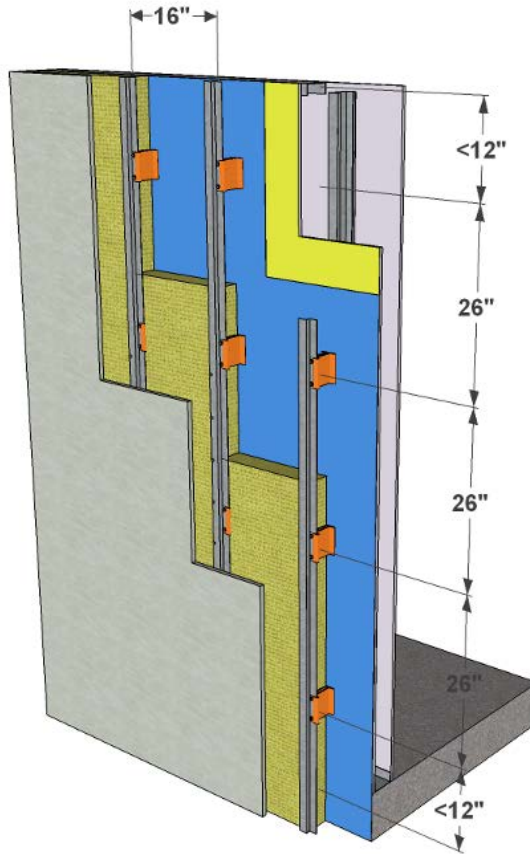
Clips: 26" O.C. vertically  
16" O.C. horizontally\*

\* 24" O.C. horizontal spacing is also possible, when stud layout, or concrete/CMU substrate make this spacing practicable.

**Substrates:** Steel framing, wood framing, mass concrete, CMU.

**Warning:** This information is for general guidance only; engineer's specifications always supersede this information – check your project's specific requirements.

Engineers may specify alternate layout patterns, including lesser or greater Clip spacing than the layout shown.



### Assembly Sequence

|  |  |
|--|--|
| <p><b>Vertically oriented Z-Girts</b></p> <ol style="list-style-type: none"> <li>1) Slide Clips onto z-girts. Pre-punched Z-girts recommended.</li> <li>2) Long fasteners attach Z-girt, through Clips, into structure.</li> <li>3) Next step: insulation.</li> </ol>      |  |
| <p><b>Horizontally oriented Hat Tracks</b></p> <ol style="list-style-type: none"> <li>1) Position Clips behind hat track. Slotted track recommended.</li> <li>2) Long fasteners attach track, through Clips, into structure.</li> <li>3) Next step: insulation.</li> </ol> |  |

Installation demo video available at [www.cascadiaclick.com](http://www.cascadiaclick.com)